

SAILING INSTRUCTIONS

CLASSIC YACHT RALLY

Organised by



Supported by

United Choice Ltd, Ka Wah Shipyard Ltd,
Hong Kong Engineering Co, Wing Woo Sail Maker



BRETTET
ENGINEERING CO., LTD.



Hong Kong Hobie Club
香港雙體帆船會



To be held on
4 & 5 May
2013

For sailing instructions and entry form download from www.abclubhk.com

THE EVENT

The event will be held over the weekend of 4th and 5th May 2013 for the ninth time, and is an 'open to all' boating get-together, featuring classic and non classic yachts, incorporating the ABC's annual Two Legged Race. The event will also include a variety of class prizes.

The programme includes:

On Saturday 4th May,

- One race or rally starting at 1400 hours, from Stanley Bay to Tai Tam Bay.
- A dinner at about 1900 hours for those who have pre-ordered.
- An overnight at anchor off the Hobie Club in Tai Tam.

On Sunday 5th May,

- Breakfast, a race or a treasure hunt starting at 1000 hours, back to Deep Water Bay.
- A Concours d'Elegance
- A BBQ and prize giving at Middle Island.

Boats may race or cruise on Saturday or Sunday, or on both days, or may simply turn up for the supper on Saturday night and/or the BBQ at Middle Island on Sunday with prior booking.

All types of boats are invited to participate in the event, including non-classics, dinghies, multi-hulls and classic motorboats. The races will have separate divisions for each type of boat and there will be prizes for the winners in each division.

Drinks in Tai Tam are traditionally on the BYO principle but ABC will also have a stock of cold beers and wine to purchase on the night from the Committee boat or on the beach.

Visitors wishing to travel to the Hobie Club beach on the club boat, should be at the ABC main clubhouse pontoon by 1730 hours prompt and will be charged \$50 per head. A maximum of 10 passengers will be allowed on first come first served basis.

SAILING INSTRUCTION CONTENT

- 1. RULES**
- 2. NOTICES TO COMPETITORS**
- 3. CHANGES TO SAILING INSTRUCTIONS**
- 4. SCHEDULE OF RACES**
- 5. DIVISIONS AND CLASSES**
- 6. MARKS**
- 7. THE STARTS AND CLASS FLAGS**
- 8. COURSES**
- 9. RACING AREAS**
- 10. THE FINISH**
- 11. SHORTEN COURSE**
- 12. RESULTS AND PRIZES**
- 13. MISCELLANEOUS**
- 14. APPENDICES**

1. **RULES**

The Race will be governed by the 'rules' as defined in *The Racing Rules of Sailing 2013-2016 (RRS)*, The *HKPN Handicap System* as administered by the HKSF, *The Aberdeen Boat Club Standard Sailing Instruction (SSI's)* and these *Classic Yacht Rally 2013 Sailing Instructions (SI's)*. In case of conflict between any of the above, succeeding items take precedence.

2. **NOTICES TO COMPETITORS**

Notices to competitors will be posted on the Club notice boards located at the upper car park entrance of the club; they will be sent to all known participants' e-mails and up-loaded on the race webpage.

3. **CHANGES TO SAILING INSTRUCTIONS**

Any changes to sailing instruction will be posted on the club notice board, distributed by email to all known participants and uploaded to the race webpage no later than 0900 hours on Saturday 4th May.

4. **SCHEDULE OF RACES**

The race schedule for the rally is as follows.

DAY	RACE NUMBER	1st WARNING SIGNAL
Saturday	Race 1	1355
Sunday	Race 2	0955

5. **DIVISIONS AND CLASSES**

- Division 1 A :** Classic Racing Yachts built more than 25 years ago with an HKPN of 1050 or less
- Division 1 B :** Classic Cruising Yachts built more than 25 years ago with an HKPN of 1051 or more
- Division 2 A :** Non-Classic Racing Yachts with an HKPN of 950 or less
- Division 2 B :** Non-Classic cruising Yachts with an HKPN of 951 or more
- Division 3 :** Modern Yachts with a classic design and a valid HKPN.
- Division 4 :** Dinghies
- Rally division:** is opened to all non-racing boats following the course only and must be declared not later than Saturday 4th May 1000
This division is not open to prizes.
- "Concours D' Elegance":** Divisions 1A, 1B and 3 may enter this concours, subject to entries, classes may be constituted as follows:
- Classy Class:** Design year less than 25 years old,
Classic Class: Design year 25-45 years old,
Vintage Class: Design year 46-65 years old,
Antique Class: Design year >65 years old,

Design Class:

Consideration for Class prize will be given for 3 or more entries in the following classes: Taipan, Cape Carib, Various Cheoy Lee, Flying Fifteen, Dragons, Sonata, Ruffian and Impala.

6. **MARKS**

The port end start mark will be orange cylindrical buoy set as an ODM

The Port end finishing mark will be an orange cylindrical buoy

The windward mark (if laid) will be an orange cylindrical buoy.

Marks of the course will be Island's, Navigation Marks and black inflatable ABC Buoy as described in section 8, courses.

7. **THE STARTS AND CLASS FLAGS**

Races will be started by using the rule 26 with warning signal made 5 minutes before the start signal.

The Starting Line will be between a staff displaying an orange flag on the Signal Boat at the Starboard end, and the starting mark(ODM) at the Port end.

If Flag "W" is displayed with the course number (flag), the first mark of the course will be an orange cylindrical mark to windward of the starting line and shall be rounded to Port, if a red flag is displayed below Flag 'W', and to Starboard if a green flag is displayed. The second mark of the course will be the first mark in the course description. If a "W" flag is not flown, the first mark of the course will be the one listed in the course description in Section 8.

(a) Saturday

The starting line for the Saturday race will be laid in Stanley Bay in the vicinity of St Stephen's Beach and Blake's Pier near Murray House.

Boats in Divisions 1A and 2A will start together at 14:00 using IC flag E.



Boats in Division 1B and 2B will start together at 14:05 using IC flag F.



Boats in Division 3 will start at 14:10 using IC Flag G



Boats in Division 4 will start at 14:15 using IC Flag U



(b) Sunday

The starting line for the Sunday race will be laid in the outer part of Tai Tam Bay.

Boats in Divisions 1A and 2A will start together at 10:00 using IC flag E.



Boats in Division 1B and 2B will start together at 10:05 using IC flag F.



Boats in Division 3 will start at 10:10 using IC Flag G.



Boats in Division 4 will start at 10:15 using IC Flag U



8. COURSES

(a) Saturday courses

<u>Course A (≈ 5.5 MILES)</u>	
Start	STANLEY BAY
Chesterman Buoy	PORT
ABC Mark	PORT
Finish	TAITAM BAY

<u>Course B (≈ 10.5 MILES)</u>	
Start	STANLEY BAY
Chesterman Buoy	PORT
Castle Rock	PORT
Beaufort Island (passing)	PORT
Fury Rocks	PORT
Finish	TAITAM

<u>Course C (≈ 12.5 MILES)</u>	
Start	STANLEY BAY
Chesterman Buoy	PORT
Castle Rock	STARBOARD
Po Toi Island	PORT
Sun Kong Island (passing)	STARBOARD
Finish	TAITAM BAY

<u>Course D (≈ 19 MILES)</u>	
Start	STANLEY BAY
Chesterman Buoy	PORT
Castle Rock	STARBOARD
Po Toi Island	PORT
Waglan Island	PORT
Shek O Rock	PORT
Finish	TAITAM BAY

(b) Sunday courses

<u>Course A (≈ 8 MILES)</u>	
Start	TAITAM BAY
Beaufort Island	STARBOARD
Castle Rock	STARBOARD
Chesterman Buoy	STARBOARD
Finish	MIDDLE ISLAND

<u>Course B (≈ 16 MILES)</u>	
Start	TAITAM BAY
Fury Rocks	STARBOARD
Beaufort Island (passing)	STARBOARD
Castle Rock	STARBOARD
Chesterman Buoy	STARBOARD
Castle Rock	STARBOARD
Chesterman Buoy	STARBOARD
Finish	MIDDLE ISLAND

<u>Course C (≈ 20 MILES)</u>	
Start	TAITAM BAY
Beaufort Island	PORT
Shek O Rock	STARBOARD
Waglan Island	STARBOARD
Po Toi Island	STARBOARD
Chesterman Buoy	STARBOARD
Finish	MIDDLE ISLAND

9. **RACING AREAS**

Refer to point number 12 "Appendices" to see the locations and the courses of the races.

10. **THE FINISH**

The Finish line will be between a staff displaying an orange flag on the Finishing Boat at the Starboard end and the Port-end Finishing mark.

(a) Saturday

The finishing line for the Saturday race will be laid in the outer part of Tai Tam Bay, opposite to the Quarry, at approximate GPS position 22° 12.5' N, 114° 14.14' E.

(b) Sunday

The finishing line for the Sunday race will be laid in the general area south of Chung Hom Wan (Chung Hom Bay) and Round Islands in the vicinity of N 22° 12.6' E 114° 11.3'

11. **SHORTEN COURSE**

Shorten course will be as per RRS Rule 32

12. **RESULTS & PRIZES**

Prizes will be awarded by divisions as described above.

An overall HKPN prize will also be awarded for the combined result in division 1A and 1B.

Separate class prizes may be awarded to Sonata, Ruffian, Impala, Taipan, Cape Carib and Cheoy Lee yachts provided a minimum of 3 entries for that class are received.

Results for the other divisions will be calculated on HKPN corrected time.

Special prizes will be awarded by the race committee as required.

(A) The Combined Divisions Race Prizes

(Awarded on corrected time on Sunday)

"Seachange-3G, Classic Yacht Rally Trophy".

The first classic yacht on the overall combined result of both days in divisions 1A & 1B.

"The Tai Tam Cup".

The first non classic yacht on the overall combined result of both days in divisions 2A & 2B

(B) The Days Prizes Awarded On Saturday And Sunday

- The first classic yacht to finish on Saturday, **"Wins a Bottle of Whiskey"**
- The first classic yacht to finish on Sunday, **"Wins a Bottle of Whiskey"**
- The first non classic yacht to finish on Saturday, **"Wins a Bottle of Whiskey"**
- The first non classic yacht to finish on Sunday, **"Wins a Bottle of Whiskey"**

(C) The Classic Class Prizes If The Class Is Opened

The qualifying race for these cups is the Sunday race

- First Taipan on corrected time wins, "CYR 2013 Taipan Tanker"
- First Sonata on corrected time wins, "CYR 2013 Sonata Tanker"
- First Ruffian on corrected time wins, "CYR 2013 Ruffian Tanker"
- First Impala on corrected time wins, "CYR 2013 Impala Tanker"
- First Cape Carib on corrected time wins, "CYR 2013 Cap Carib Tanker"
- First Cheoy Lee on corrected time wins, "CYR 2013 Cheoy Lee Tanker"
- First Dragon on corrected time wins, "CYR 2013 Dragon Tanker"
- First Flying Fifteen on corrected time wins, "CYR 2013 Flying Fifteen Tanker"

(D) Other Prizes

Awarded on Sunday for:

- **The oldest yacht.** (Including the average crew and the yacht age)
- **The most colourful crew.** (Classic or themed attire worn during and after the race)
- **The best bikini display.** (worn or hung tastefully on board and ashore)

(E) The Concours D'elegance Prizes If Opened

The "Concours d' elegance" will be conducted on Sunday 5th and is open only to Classic Yachts. Prizes will be allocated by the race officer and a Hong Kong yachting specialist as follows:

1. Bristol prize: This is the boat that is maintained in the most perfect condition, with the most flawless varnish, most impeccable presentation, and cleanest inside and outside, most obviously exuding the care and attention of a fanatic for perfection. Attention will be paid to how the lines are coiled as well as to the overall intoxicating beauty of the sailing creature known as a boat.

2. Most authentic prize: They just need to be authentic and sincere and rigged in keeping with the original design. Actual age matters here. Lots of real wood matters. The judges will look for character and integrity which trump pure beauty. They will give positive points for boats using the hardware and rigging appropriate to the age of the boat or the era of its design.

13. MISCELLANEOUS

- **Signing Rights**

Visiting competitors from clubs with reciprocal arrangements may, upon presentation of their parent club membership card, sign chits on race days, skippers' briefings and prize giving events. Other visiting competitors may purchase books of cash coupons, which are readily available from the club office or the bar.

- **Moorings**

Subject to availability, temporary moorings can be provided for yachts wishing to stay overnight before or after a race, either in Deep Water Bay or in Aberdeen Typhoon Shelter. Arrangements should be made with the club sailing office on 2553 3032.

- **Insurance**

Entered boats shall have third party liability insurance at least to the minimum cover required under Hong Kong SAR law and entrants shall produce their certificates of insurance if requested by the Race Committee.

- **Safety**

Boats shall comply with the ORC Special Regulations Category 4 and shall be fitted with an engine capable of propelling the boat at a speed in knots equal to the square root of its LWL in feet.

- **Trash disposal**

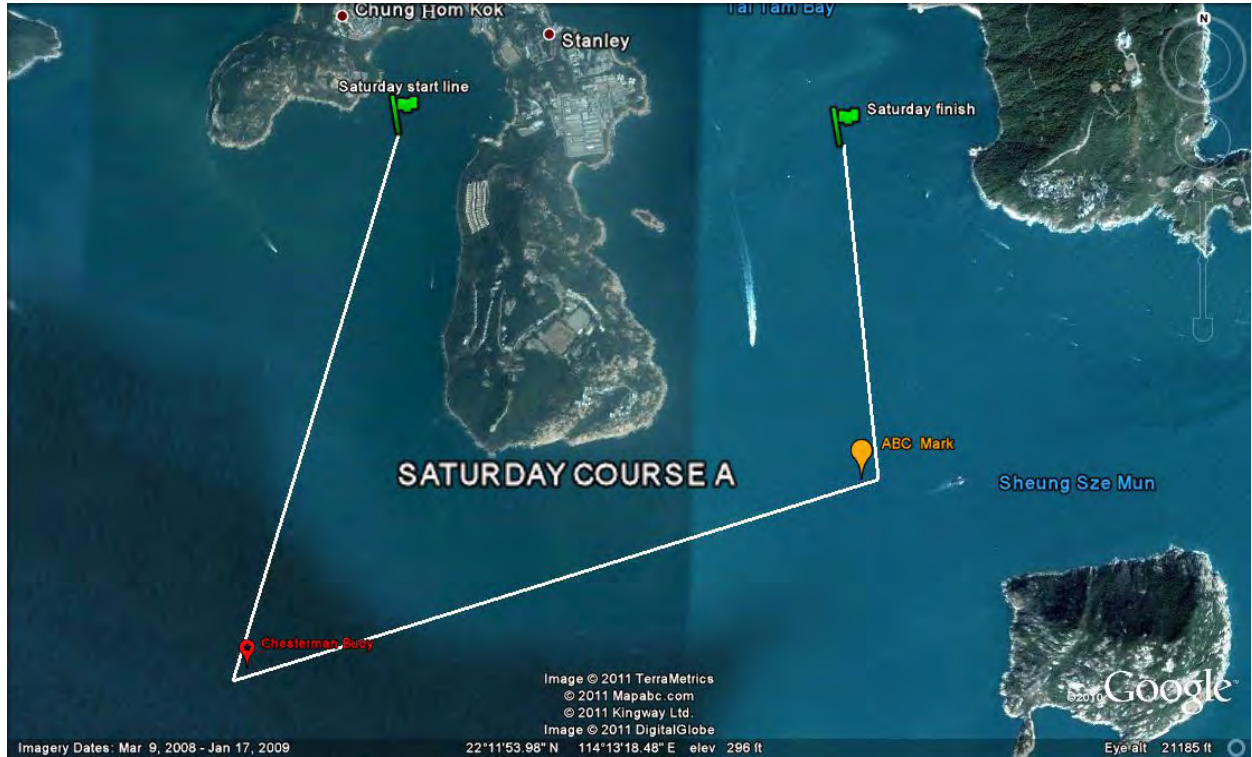
Boats should not put trash in the water but use collection bin at the clubhouse or on the committee boat.

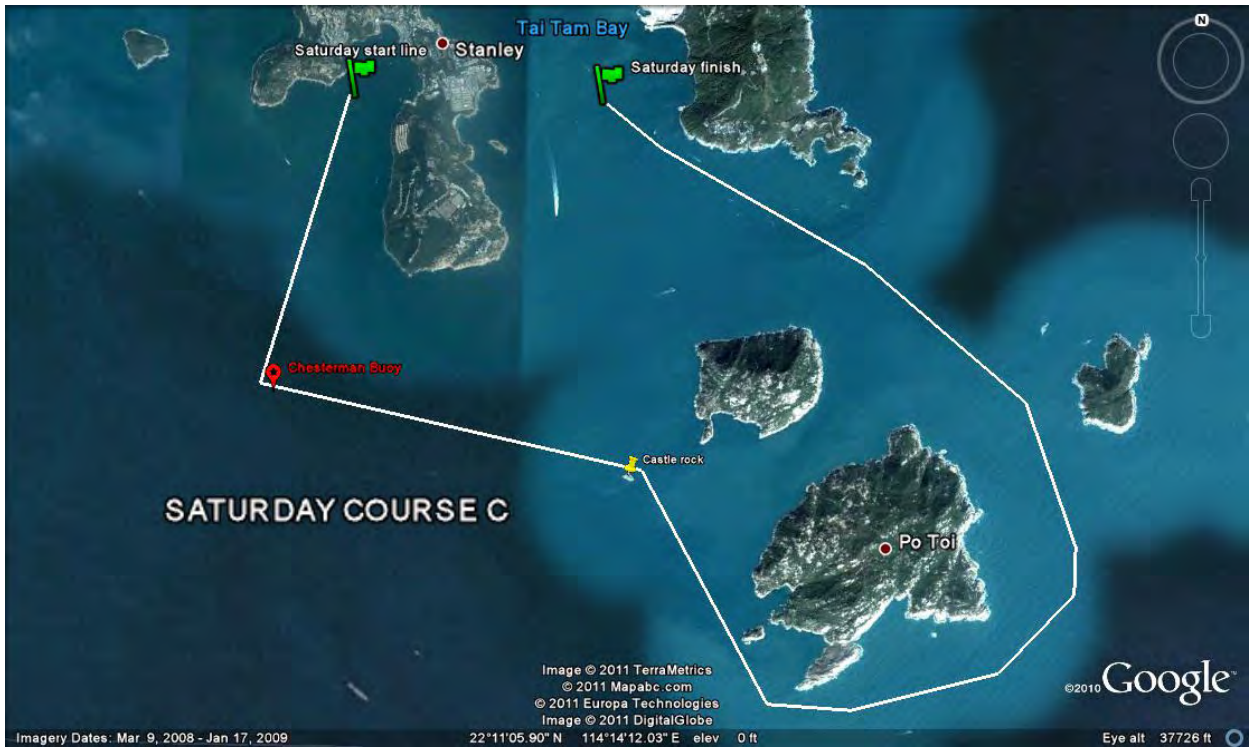
- **Disclaimer of liability**

Participants compete entirely at their own risk; see RRS 4, Decision to Race. The Organising Authority, Regatta volunteers, the Aberdeen Boat Club and its officers, members and employees, Regatta sponsors and their representatives, officers, and members, accept no liability whatsoever for any loss of life or property, personal injury and damage caused by, or arising out of the Regatta.

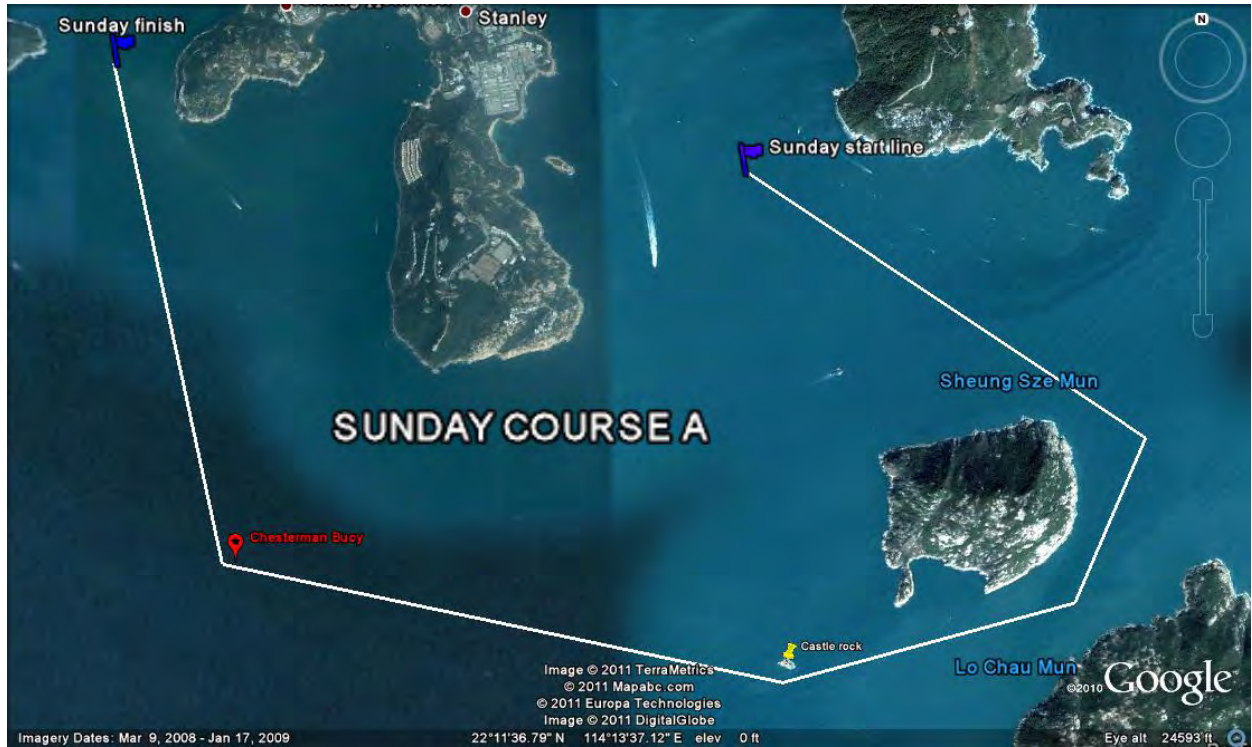
14. APPENDICES

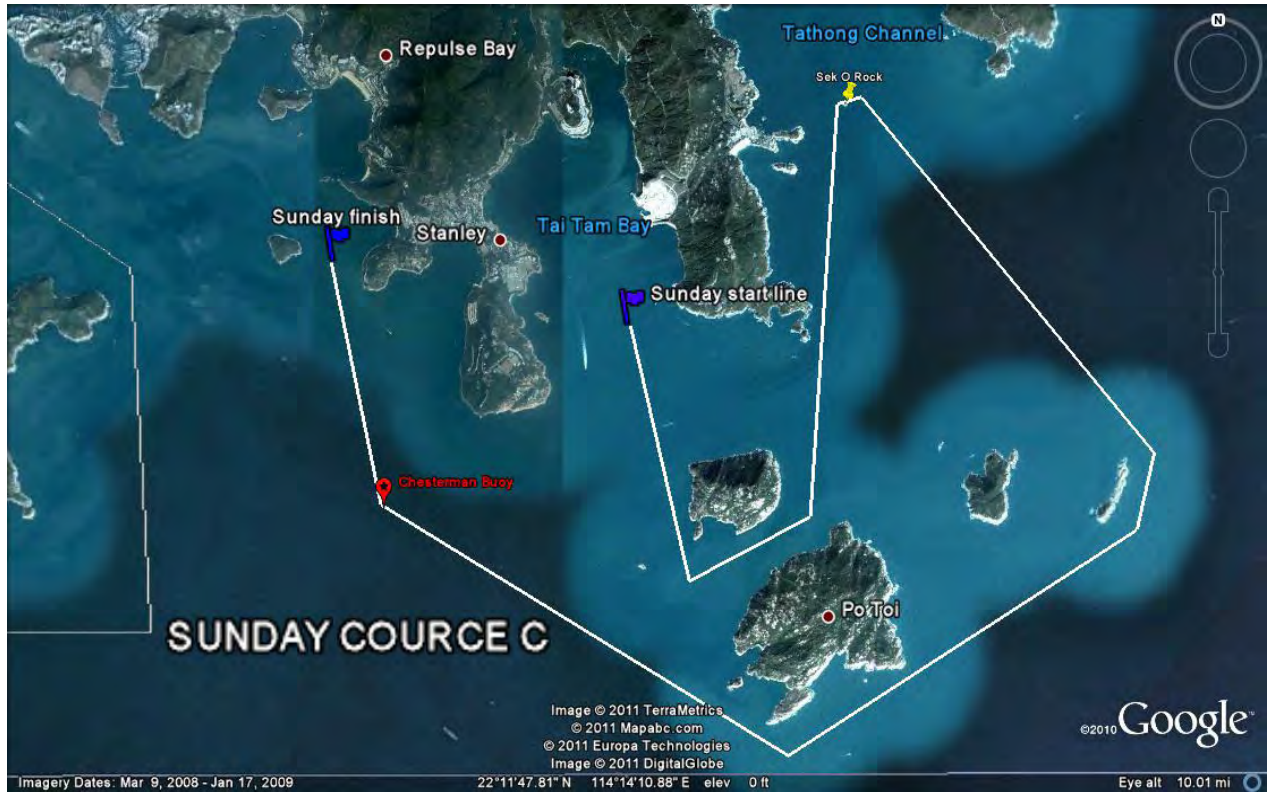
(a) SATURDAY COURSES





(b) Sunday courses





(c) **USEFUL CONTACT**

Aberdeen Boat Club

Angela Ho, Sailing Secretary 2552 8182 (836) sailingsecretary@abclubhk.com
Eileen Sze, Keelboat and Marine Assistant Manager keelboatsailing@abclubhk.com
Philippe de Manny, General Manager genman@abclubhk.com

Race Officer (1) 9312 8893
Race officer (2) 9124 6400

Emergency & Official

Marine Police 2803 6240
Marine Assistance at Sea 2803 6267
Maritime Search and Rescue Co-ordination Centre 2233 7999